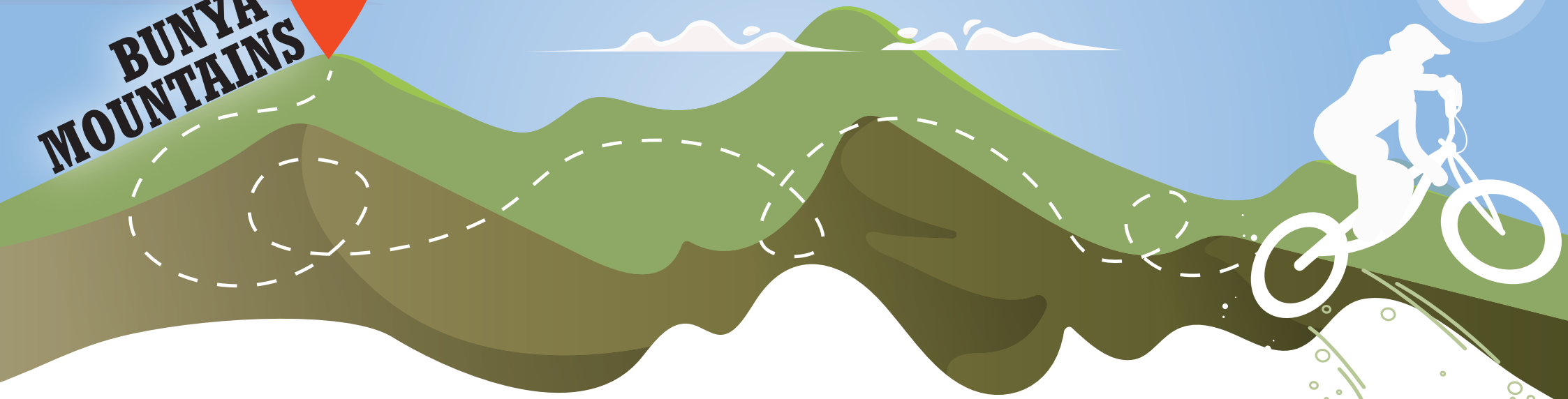




Experience Western Downs

It's the people that make it.

BUNYA MOUNTAINS



The Bunya Mountains Mountain Bike trails offer a brand new adrenalin experience for all ages. This exciting new experience consists of 18 km of mountain bike trails to be constructed in Russell Park at the Bunya Mountains. This new adventure experience will create exciting new recreational opportunities which will cater to all riding abilities. The trails will link up with several sites in the area including the Russell Park Picnic Area, Bunya Mountains Outlook (Fishers Lookout), and Rifle Bird Park.

Open and Ready to Ride!

The Bunya Mountains Mountain Bike Trails were delivered by Western Downs Regional Council under its COVID-19 Recovery Package to secure and create jobs and boost liveability in the region. This project is funded by Western Downs Regional Council and the Australian Government's Local Roads and Community Infrastructure Program.

FIND OUT MORE! 

Project Information

Visit Council website www.wdrc.qld.gov.au

Tourist Information

Visit www.westerndownsqueensland.com.au



Western Downs Regional Council



@westerndownsrc



WesternDownsCouncil



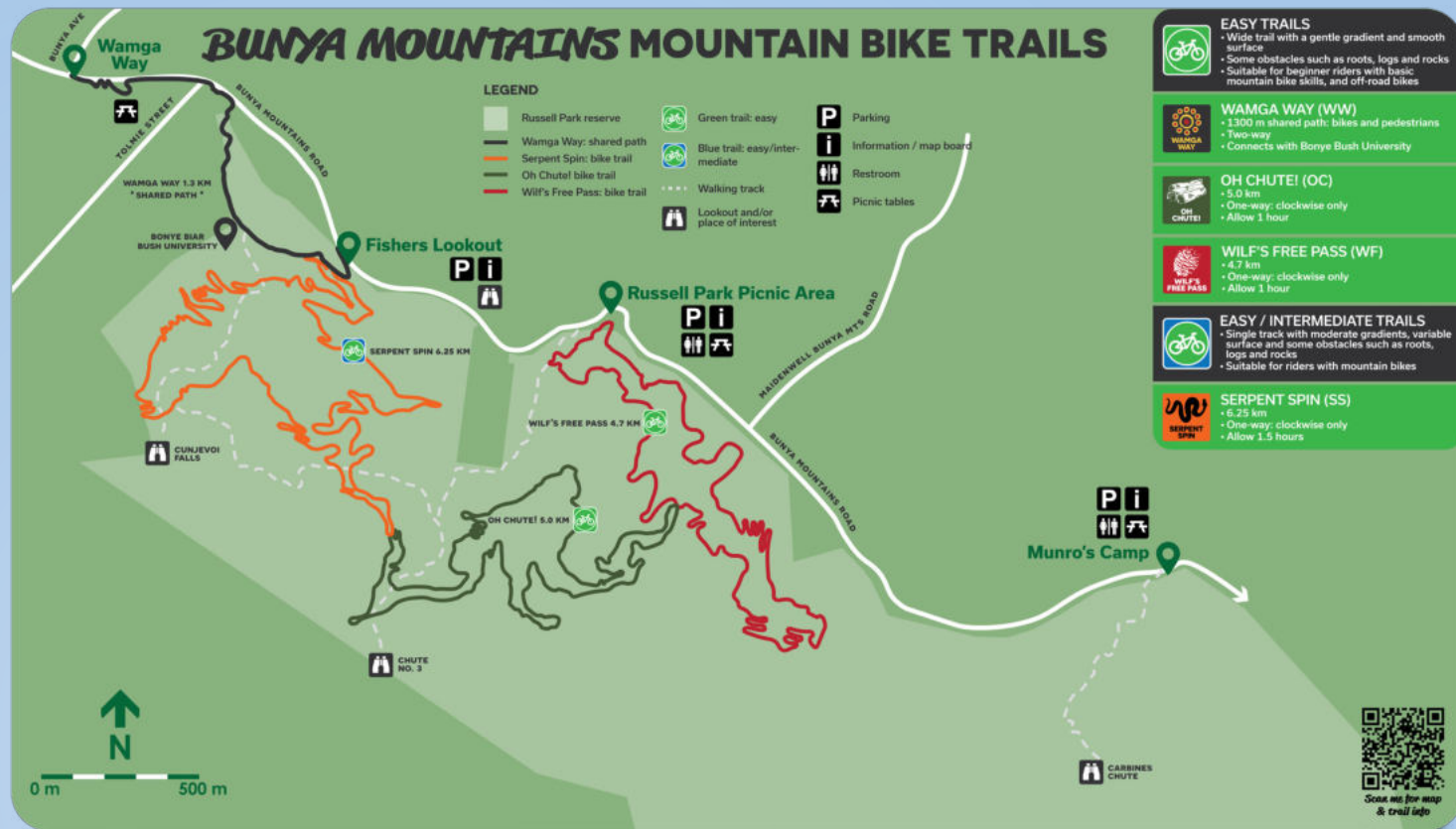
Western Downs Regional Council

Bunya Mountains
Mountain Bike Trails

The Region's Newest Adventure Experience

KEY FEATURES

- Approximately 18kms of trails in total
- Three designated trails and one shared use trail of varying lengths rating from easy to easy intermediate
- Trails range in length from 1.3km to 6.3km
- Designated interface points to accommodate both the mountain bike trails and the walking trails
- Designed to preserve the natural environment, minimal footprint in the pristine Bunya Mountains locality



The project also includes construction of new public spaces and access points on each trail.

- New amenities
- Designated car parking
- Significant landscaping
- Picnic settings

The Bunya Mountains are a spectacular sight, rising up more than 1,100 metres from the plains of the Western Downs below. Offering panoramic mountain scenery, incredible views and abundant wildlife. The Bunya Mountains National Park is Queensland's second oldest park, and its famous foliage has the rings to prove its age. The area's flora is rich and buried, ranging from bunya pines to evergreen eucalyptus and are a bird watcher's paradise. A range of walking tracks wind through towering rainforest, past sparkling clear creeks and views that go forever.