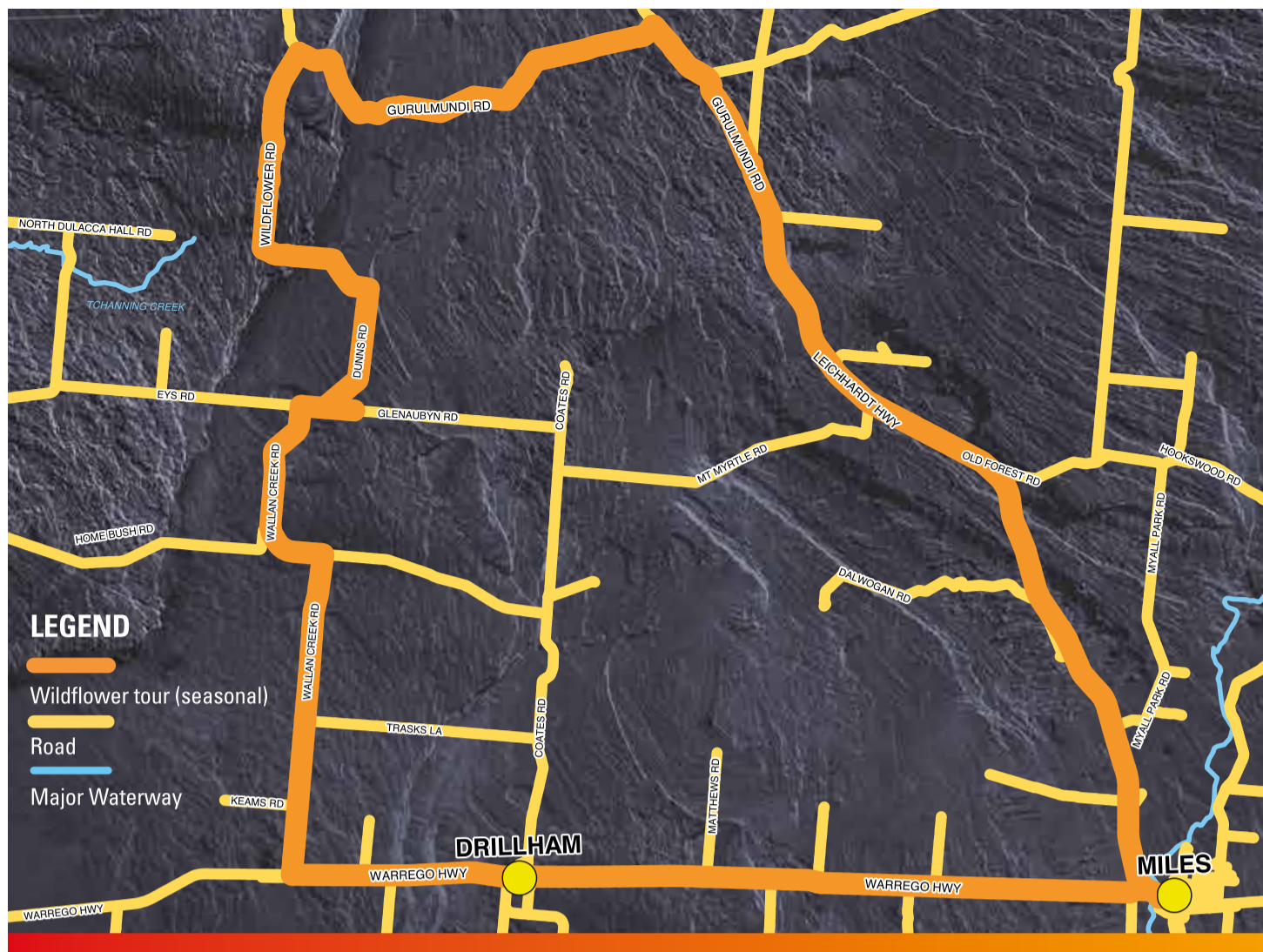


Experience Western Downs

It's the people that make it.

Miles AND Gurulmundi WILDFLOWER TOUR



ASK A LOCAL.

We hope you enjoy your stay. The information is a guide only. Always drive to conditions and if in doubt, ask a local!

Miles Visitor Information Centre
Miles Historical Village Museum,
Murilla Street, Miles QLD 4415
☎ (07) 4627 1492
✉ miles.vic@wdrc.qld.gov.au
🌐 www.westerndownsqueensland.com.au

OPENING HOURS:
Monday to Sunday 8.30am to 4.30pm



Take The Tour

📷 HAC Imagery

START Commence at Dogwood Crossing library and art gallery.

Travel west along the main street towards Taroom and Roma.

0.9km Cross the bridge. Moraby Park on the right.

Why not stop and take a walk along the **Dogwood Creek Walking Track** for 1.5km to **Chinaman's Lagoon** on the southern edge of Miles.

1.1km Turn right towards Taroom / Rockhampton.

Established in 1888 as a passenger and mail coach service between Miles and Taroom. Became one of the fastest coach services in Australia. The road was upgraded in 1946 to become part of the Leichhardt Highway.

10.7km Dalwogan Road on the left. (Private property no access)

This is the site of the first railway siding on the Wandoan line. The old railway siding building is now part of the Miles Historical Village Museum, complete with train! *Dalwogan is the aboriginal word meaning 'turtle'*. Continue straight on the Leichhardt Highway.

FOR YOUR SAFETY, we recommend high-clearance vehicle, SUV, all-wheel and four-wheel drive vehicle, as you will be travelling on unsealed & dirt roads through a State Forest.

14.0km Jim Corbett Bridge over Nine Mile Creek.

Is named after the first president of the Dulacca-Jackson branch of the Graziers Association in 1946. Jim Corbett later served as a member of the Leichhardt Rabbit Board and as a Murilla Shire Councillor.

19.6km Possum Park on the right.

Bushland caravan park and camping area. Former RAAF Kowguran base used during World War II as the main explosive store on the Brisbane line, with the underground ammunition bunkers now transformed into self-contained units. The park also has restored railway carriages as self-contained units and a former 1950's TAA Vickers Viscount plane being lovingly restored. No casual sightseeing.

22.0km Cross the Dingo Barrier Fence.

(Grid over highway) the longest continuous fence in the world stretching some 5,600km.

28.4km Take the Gurulmundi Turnoff on left.

Sign indicates wildflowers.

30.3km Cross L-Tree Creek.

Creek crossing. Please note flood markers - if it's flooded, forget it.



Dogwood Crossing library and art gallery

31.1km Continue straight ahead past Sibelco Bentonite.

Mine entrance on the left - no public access. Australia's largest bentonite mine, operating since 1978. (*Bentonite is a white clay product delivered from volcanic ash; used for its binding, sealing, lubricating, thickening and absorbing properties in foundry, civil engineering, ceramics, dam sealing and animal feed applications*).

▶ You will see a Y road section past the Bentonite mine entrance. Please turn right to continue on Gurulmundi Road.

▶ Note further creek crossings with flood markers, if it's flooded, forget it.

31.5km Gurulmundi Hall on the right.

Close to the old boundary between the former Murilla and Taroom Shires.

33.9km Y road intersection.

Turn left to continue on Gurulmundi Road (unsealed), follow the wildflower sign. Several places to admire the abundant wildflowers. Signs indicate varieties. Also some wonderful gorges and fine examples of spotted gum trees.

Calytrix Gurulmundensis restricted occurrence north west of Toowoomba, Qld. Calytrix from Greek words - calyx and thrix (a hair): referring to hairs at the end of the calyx lobes.

Gurulmundensis - occurring near the township of Gurulmundi.



Calytrix Gurulmundensis

The Tour Continued...



Acacia longifolia

47.1km Turn left here at Wildflower Road to continue viewing wildflowers.

Driving through Gurulmundi State Forest. Many small timber mills in the area cut mainly cypress pine for the construction of houses and other buildings by new selectors. Some families supplemented their incomes by cutting spotted gum and ironbark for railway sleepers, bridge transoms and girders.

49.3km Go through the gate, making sure to close it after you as cattle graze in this area.

55km The Dingo Barrier Fence follows this road on the right.

57.4km Pass through the gate and turn right into Dunn's Road.

Again, please close the gate after you.

61.5km Turn right into Glенаubyn Road. See sign post showing the history of the old Wallan Creek School that was originally on this site.



Geraldton Wax



Hakea purpurea

61.6km Cross the Dingo Barrier Fence. (Grid over road)

62.3km Turn left into Wallan Creek Road. (now a sealed road). You will see variety of farms with crops or grazing beef cattle.

68.5km Turn right to stay on Wallan Creek Road. (following sealed road).

70.9km "Devoncourt" on the right. Renowned multi award winning Hereford cattle stud.

78.5km Warrego Highway. Now turn left.

79.2km Ulimaroa Silos on the right. Originally a small siding used for the collection of cream from the local dairymen, it later became the site for a bagged wheat depot. The little siding itself was destroyed in 1980 when a wild storm blew it onto the railway tracks and a passing train then finished the job! Highest point on the western Railway line - 1158 feet (354m) above sea level.

85.6km **The town of Drillham.** Originally called Delirium Creek from the early years when typhoid fever raged the area. **Cross Drillham Creek.** Cairn on your left in the rest area, stop and read the story of an accidental drowning that occurred in the railway weir. A dam was built here in 1906 to provide water for steam locomotives and was enlarged in 1921.

86.0km **Gregory Street - continues beyond the town as Coates Road.**

Named to honour the memory of William Coates who was appointed Shire Clerk from 1913-1934. He instigated the local newspaper *Murilla Express* which was later known as the *Murilla Advertiser*, now incorporated with the *Chinchilla News* only available online.



Grasstrees



Grevillea

87.8km **Site of old Brick Hill Brickworks is on the left.**

Established in 1938, the first method used (wet press) proved too slow, so was replaced by the dry press method. Closed down in 1942, due to the enlistment for war service but re-opened in 1946. Finally closed down a few years later and sold for removal. Bricks made here were used in building Miles Trading Co. (now Murilla Hardware) Rex Theatre (now Miles Auto Parts) and the Windsor Hotel.

94.6km **Goonalah Railway Crossing.** Once the site of a small provisional school (1913-1925). At this and other similar rail crossings, two large gates had to be opened, one in the rail fence and one in the rabbit fence. Failure to close the rabbit fence gate carried a penalty not exceeding 200 pounds (\$400). Children and swaggies made a few bob by opening and closing the gate for the traffic coming through.



Grevillea

98.6km **Paddy's Creek Historical Site on the right.** Stop and read about Clara Waters who features in a Slim Dusty song.

99.2km **Paddy's Creek Road was the site of Murilla Oil Company.** Formed in January 1937, the method of drilling was by percussion bore sinking which reached a depth of more than 600m. Rotary drills were unheard of in this area at the time.

101.6km **Warrego Highway. Boyanda on the right.** Another small railway siding established in approximately 1913 as a pick-up point for cream deliveries and local school children - it was withdrawn as a stopping place in 1949. A small property called 'Boyanda' is on the right. This section of road was once a glorified track through the trees and was only gazetted from Miles to Dulacca as a main road in 1948. The same section was upgraded, bitumen surfaced and regazetted as part of the Warrego Highway in 1964.

105.4km **Cross RJ Simmonds Bridge over the Dogwood Creek. You are now back in Miles.**



Wildflower track



Devil's Needles

Dogwood Creek was named by explorer Ludwig Leichhardt in 1844 and the town of Miles began as a teamster's camp originally named Dogwood Crossing. The name was changed in 1878 to commemorate William Miles, the local Member of Parliament and Minister for Public Works, who opened the Miles Railway Station.



Acacia Wattle

Disclaimer: The information contained in this brochure is provided as a guide only. Whilst every care has been taken to ensure the accuracy and reliability of information, WDRC expressly disclaims any liability or responsibility for the accuracy of the information contained herein.